

EXHIBIT 12

This is a reproduction of a library book that was digitized by Google as part of an ongoing effort to preserve the information in books and make it universally accessible.

Google™ books

<https://books.google.com>



A
Glossary of
Historic
Masonry
Deterioration
Problems
and
Preservation
Treatments



1
2
3
4
5
6
7
8
9
10
11
12
13
14
15
16
17
18
19
20
21
22
23
24
25
26
27
28
29
30
31
32
33
34
35
36
37
38
39
40
41
42
43
44
45
46
47
48
49
50
51
52
53
54
55
56
57
58
59
60
61
62
63
64
65
66
67
68
69
70
71
72
73
74
75
76
77
78
79
80
81
82
83
84
85
86
87
88
89
90
91
92
93
94
95
96
97
98
99
100
101
102
103
104
105
106
107
108
109
110
111
112
113
114
115
116
117
118
119
120
121
122
123
124
125
126
127
128
129
130
131
132
133
134
135
136
137
138
139
140
141
142
143
144
145
146
147
148
149
150
151
152
153
154
155
156
157
158
159
160
161
162
163
164
165
166
167
168
169
170
171
172
173
174
175
176
177
178
179
180
181
182
183
184
185
186
187
188
189
190
191
192
193
194
195
196
197
198
199
200
201
202
203
204
205
206
207
208
209
210
211
212
213
214
215
216
217
218
219
220
221
222
223
224
225
226
227
228
229
230
231
232
233
234
235
236
237
238
239
240
241
242
243
244
245
246
247
248
249
250
251
252
253
254
255
256
257
258
259
260
261
262
263
264
265
266
267
268
269
270
271
272
273
274
275
276
277
278
279
280
281
282
283
284
285
286
287
288
289
290
291
292
293
294
295
296
297
298
299
300
301
302
303
304
305
306
307
308
309
310
311
312
313
314
315
316
317
318
319
320
321
322
323
324
325
326
327
328
329
330
331
332
333
334
335
336
337
338
339
340
341
342
343
344
345
346
347
348
349
350
351
352
353
354
355
356
357
358
359
360
361
362
363
364
365
366
367
368
369
370
371
372
373
374
375
376
377
378
379
380
381
382
383
384
385
386
387
388
389
390
391
392
393
394
395
396
397
398
399
400
401
402
403
404
405
406
407
408
409
410
411
412
413
414
415
416
417
418
419
420
421
422
423
424
425
426
427
428
429
430
431
432
433
434
435
436
437
438
439
440
441
442
443
444
445
446
447
448
449
450
451
452
453
454
455
456
457
458
459
460
461
462
463
464
465
466
467
468
469
470
471
472
473
474
475
476
477
478
479
480
481
482
483
484
485
486
487
488
489
490
491
492
493
494
495
496
497
498
499
500
501
502
503
504
505
506
507
508
509
510
511
512
513
514
515
516
517
518
519
520
521
522
523
524
525
526
527
528
529
530
531
532
533
534
535
536
537
538
539
540
541
542
543
544
545
546
547
548
549
550
551
552
553
554
555
556
557
558
559
560
561
562
563
564
565
566
567
568
569
570
571
572
573
574
575
576
577
578
579
580
581
582
583
584
585
586
587
588
589
590
591
592
593
594
595
596
597
598
599
600
601
602
603
604
605
606
607
608
609
610
611
612
613
614
615
616
617
618
619
620
621
622
623
624
625
626
627
628
629
630
631
632
633
634
635
636
637
638
639
640
641
642
643
644
645
646
647
648
649
650
651
652
653
654
655
656
657
658
659
660
661
662
663
664
665
666
667
668
669
670
671
672
673
674
675
676
677
678
679
680
681
682
683
684
685
686
687
688
689
690
691
692
693
694
695
696
697
698
699
700
701
702
703
704
705
706
707
708
709
710
711
712
713
714
715
716
717
718
719
720
721
722
723
724
725
726
727
728
729
730
731
732
733
734
735
736
737
738
739
740
741
742
743
744
745
746
747
748
749
750
751
752
753
754
755
756
757
758
759
760
761
762
763
764
765
766
767
768
769
770
771
772
773
774
775
776
777
778
779
780
781
782
783
784
785
786
787
788
789
790
791
792
793
794
795
796
797
798
799
800
801
802
803
804
805
806
807
808
809
810
811
812
813
814
815
816
817
818
819
820
821
822
823
824
825
826
827
828
829
830
831
832
833
834
835
836
837
838
839
840
841
842
843
844
845
846
847
848
849
850
851
852
853
854
855
856
857
858
859
860
861
862
863
864
865
866
867
868
869
870
871
872
873
874
875
876
877
878
879
880
881
882
883
884
885
886
887
888
889
890
891
892
893
894
895
896
897
898
899
900
901
902
903
904
905
906
907
908
909
910
911
912
913
914
915
916
917
918
919
920
921
922
923
924
925
926
927
928
929
930
931
932
933
934
935
936
937
938
939
940
941
942
943
944
945
946
947
948
949
950
951
952
953
954
955
956
957
958
959
960
961
962
963
964
965
966
967
968
969
970
971
972
973
974
975
976
977
978
979
980
981
982
983
984
985
986
987
988
989
990
991
992
993
994
995
996
997
998
999
1000
1001
1002
1003
1004
1005
1006
1007
1008
1009
1010
1011
1012
1013
1014
1015
1016
1017
1018
1019
1020
1021
1022
1023
1024
1025
1026
1027
1028
1029
1030
1031
1032
1033
1034
1035
1036
1037
1038
1039
1040
1041
1042
1043
1044
1045
1046
1047
1048
1049
1050
1051
1052
1053
1054
1055
1056
1057
1058
1059
1060
1061
1062
1063
1064
1065
1066
1067
1068
1069
1070
1071
1072
1073
1074
1075
1076
1077
1078
1079
1080
1081
1082
1083
1084
1085
1086
1087
1088
1089
1090
1091
1092
1093
1094
1095
1096
1097
1098
1099
1100
1101
1102
1103
1104
1105
1106
1107
1108
1109
1110
1111
1112
1113
1114
1115
1116
1117
1118
1119
1120
1121
1122
1123
1124
1125
1126
1127
1128
1129
1130
1131
1132
1133
1134
1135
1136
1137
1138
1139
1140
1141
1142
1143
1144
1145
1146
1147
1148
1149
1150
1151
1152
1153
1154
1155
1156
1157
1158
1159
1160
1161
1162
1163
1164
1165
1166
1167
1168
1169
1170
1171
1172
1173
1174
1175
1176
1177
1178
1179
1180
1181
1182
1183
1184
1185
1186
1187
1188
1189
1190
1191
1192
1193
1194
1195
1196
1197
1198
1199
1200
1201
1202
1203
1204
1205
1206
1207
1208
1209
1210
1211
1212
1213
1214
1215
1216
1217
1218
1219
1220
1221
1222
1223
1224
1225
1226
1227
1228
1229
1230
1231
1232
1233
1234
1235
1236
1237
1238
1239
1240
1241
1242
1243
1244
1245
1246
1247
1248
1249
1250
1251
1252
1253
1254
1255
1256
1257
1258
1259
1260
1261
1262
1263
1264
1265
1266
1267
1268
1269
1270
1271
1272
1273
1274
1275
1276
1277
1278
1279
1280
1281
1282
1283
1284
1285
1286
1287
1288
1289
1290
1291
1292
1293
1294
1295
1296
1297
1298
1299
1300
1301
1302
1303
1304
1305
1306
1307
1308
1309
1310
1311
1312
1313
1314
1315
1316
1317
1318
1319
1320
1321
1322
1323
1324
1325
1326
1327
1328
1329
1330
1331
1332
1333
1334
1335
1336
1337
1338
1339
1340
1341
1342
1343
1344
1345
1346
1347
1348
1349
1350
1351
1352
1353
1354
1355
1356
1357
1358
1359
1360
1361
1362
1363
1364
1365
1366
1367
1368
1369
1370
1371
1372
1373
1374
1375
1376
1377
1378
1379
1380
1381
1382
1383
1384
1385
1386
1387
1388
1389
1390
1391
1392
1393
1394
1395
1396
1397
1398
1399
1400
1401
1402
1403
1404
1405
1406
1407
1408
1409
1410
1411
1412
1413
1414
1415
1416
1417
1418
1419
1420
1421
1422
1423
1424
1425
1426
1427
1428
1429
1430
1431
1432
1433
1434
1435
1436
1437
1438
1439
1440
1441
1442
1443
1444
1445
1446
1447
1448
1449
1450
1451
1452
1453
1454
1455
1456
1457
1458
1459
1460
1461
1462
1463
1464
1465
1466
1467
1468
1469
1470
1471
1472
1473
1474
1475
1476
1477
1478
1479
1480
1481
1482
1483
1484
1485
1486
1487
1488
1489
1490
1491
1492
1493
1494
1495
1496
1497
1498
1499
1500
1501
1502
1503
1504
1505
1506
1507
1508
1509
1510
1511
1512
1513
1514
1515
1516
1517
1518
1519
1520
1521
1522
1523
1524
1525
1526
1527
1528
1529
1530
1531
1532
1533
1534
1535
1536
1537
1538
1539
1540
1541
1542
1543
1544
1545
1546
1547
1548
1549
1550
1551
1552
1553
1554
1555
1556
1557
1558
1559
1560
1561
1562
1563
1564
1565
1566
1567
1568
1569
1570
1571
1572
1573
1574
1575
1576
1577
1578
1579
1580
1581
1582
1583
1584
1585
1586
1587
1588
1589
1590
1591
1592
1593
1594
1595
1596
1597
1598
1599
1600
1601
1602
1603
1604
1605
1606
1607
1608
1609
1610
1611
1612
1613
1614
1615
1616
1617
1618
1619
1620
1621
1622
1623
1624
1625
1626
1627
1628
1629
1630
1631
1632
1633
1634
1635
1636
1637
1638
1639
1640
1641
1642
1643
1644
1645
1646
1647
1648
1649
1650
1651
1652
1653
1654
1655
1656
1657
1658
1659
1660
1661
1662
1663
1664
1665
1666
1667
1668
1669
1670
1671
1672
1673
1674
1675
1676
1677
1678
1679
1680
1681
1682
1683
1684
1685
1686
1687
1688
1689
1690
1691
1692
1693
1694
1695
1696
1697
1698
1699
1700
1701
1702
1703
1704
1705
1706
1707
1708
1709
1710
1711
1712
1713
1714
1715
1716
1717
1718
1719
1720
1721
1722
1723
1724
1725
1726
1727
1728
1729
1730
1731
1732
1733
1734
1735
1736
1737
1738
1739
1740
1741
1742
1743
1744
1745
1746
1747
1748
1749
1750
1751
1752
1753
1754
1755
1756
1757
1758
1759
1760
1761
1762
1763
1764
1765
1766
1767
1768
1769
1770
1771
1772
1773
1774
1775
1776
1777
1778
1779
1780
1781
1782
1783
1784
1785
1786
1787
1788
1789
1790
1791
1792
1793
1794
1795
1796
1797
1798
1799
1800
1801
1802
1803
1804
1805
1806
1807
1808
1809
1810
1811
1812
1813
1814
1815
1816
1817
1818
1819
1820
1821
1822
1823
1824
1825
1826
1827
1828
1829
1830
1831
1832
1833
1834
1835
1836
1837
1838
1839
1840
1841
1842
1843
1844
1845
1846
1847
1848
1849
1850
1851
1852
1853
1854
1855
1856
1857
1858
1859
1860
1861
1862
1863
1864
1865
1866
1867
1868
1869
1870
1871
1872
1873
1874
1875
1876
1877
1878
1879
1880
1881
1882
1883
1884
1885
1886
1887
1888
1889
1890
1891
1892
1893
1894
1895
1896
1897
1898
1899
1900
1901
1902
1903
1904
1905
1906
1907
1908
1909
1910
1911
1912
1913
1914
1915
1916
1917
1918
1919
1920
1921
1922
1923
1924
1925
1926
1927
1928
1929
1930
1931
1932
1933
1934
1935
1936
1937
1938
1939
1940
1941
1942
1943
1944
1945
1946
1947
1948
1949
1950
1951
1952
1953
1954
1955
1956
1957
1958
1959
1960
1961
1962
1963
1964
1965
1966
1967
1968
1969
1970
1971
1972
1973
1974
1975
1976
1977
1978
1979
1980
1981
1982
1983
1984
1985
1986
1987
1988
1989
1990
1991
1992
1993
1994
1995
1996
1997
1998
1999
2000
2001
2002
2003
2004
2005
2006
2007
2008
2009
2010
2011
2012
2013
2014
2015
2016
2017
2018
2019
2020
2021
2022
2023
2024
2025
2026
2027
2028
2029
2030
2031
2032
2033
2034
2035
2036
2037
2038
2039
2040
2041
2042
2043
2044
2045
2046
2047
2048
2049
2050
2051
2052
2053
2054
2055
2056
2057
2058
2059
2060
2061
2062
2063
2064
2065
2066
2067
2068
2069
2070
2071
2072
2073
2074
2075
2076
2077
2078
2079
2080
2081
2082
2083
2084
2085
2086
2087
2088
2089
2090
2091
2092
2093
2094
2095
2096
2097
2098
2099
2100
2101
2102
2103
2104
2105
2106
2107
2108
2109
2110
2111
2112
2113
2114
2115
2116
2117
2118
2119
2120
2121
2122
2123
2124
2125
2126
2127
2128
2129
2130
2131
2132
2133
2134
2135
2136
2137
2138
2139
2140
2141
2142
2143
2144
2145
2146
2147
2148
2149
2150
2151
2152
2153
2154
2155
2156
2157
2158
2159
2160
2161
2162
2163
2164
2165
2166
2167
2168
2169
2170
2171
2172
2173
2174
2175
2176
2177
2178
2179
2180
2181
2182
2183
2184
2185
2186
2187
2188
2189
2190
2191
2192
2193
2194
2195
2196
2197
2198
2199
2200
2201
2202
2203
2204
2205
2206
2207
2208
2209
2210
2211
2212
2213
2214
2215
2216
2217
2218
2219
2220
2221
2222
2223
2224
2225
2226

A Glossary of Historic Masonry Deterioration Problems and Preservation Treatments

Compiled by Anne E. Grimmer

UNIVERSITY OF
MINNESOTA LIBRARY

DEC 17 1984

DEPOSITORY PUBN.
U. S. - G. P. O. - D - 296
GOVERNMENT PUBLICATIONS DIVISION

Department of the Interior
National Park Service
Preservation Assistance Division

1984

**Library of Congress Cataloging in
Publication Data**

Main entry under title:

A Glossary of historic masonry deterioration
problems and preservation treatments.

Bibliography: p.

Supt. of Docs.: I 29.2:H62/19

1. Masonry—Dictionaries. 2. Historic
buildings— Conservation and restoration—
Dictionaries.

I. Grimmer, Anne E. II. United States.

National Park Service. Preservation Assistance
Division.

TH5321.G56 1984

693'.1

84-60027

Contents

Part 1: Deterioration Problems	1
Blistering	3
Chipping	4
Coving	5
Cracking	6
Crazing	7
Crumbling	8
Delamination	9
Detachment	10
Efflorescence	11
Erosion	12
Exfoliation	13
Flaking	14
Friability	15
Peeling	16
Pitting	17
Rising Damp	18
Salt Fretting	19
Spalling	20
Subflorescence	22
Sugaring	23
Surface Crust/Surface Induration	24
Weathering	25
Part 2: Preservation Treatments	27
Maintenance	
Application of Surface Coatings	
Paint	31
Parging/Parargeting	32
Stucco	33
Waterproof Coating	35
Water-repellent Coating	36
Caulking	38
Cleaning Methods	
Abrasive Cleaning	39
Chemical Cleaning	41
Paint Removal	42
Poulticing	44
Water Washing	46
Repair	
Composite Patching/Plastic Repair	50
Consolidation	52
Dampproof Course	54
Dutchman Repair	56
Epoxy Repair	57
Mechanical Repair	58
Replacement/Patching with Like or Compatible Substitute Materials	59
Repointing/Tuckpointing	61
Selected Reading List	63

Preface

In 1981, the Preservation Assistance Division of the National Park Service initiated the Census of Treated Historic Masonry Buildings in order to fulfill its responsibility to provide sound technical advice to Federal, State, and local officials concerning the preservation of historic structures. The purpose of the Census is to establish a system for documenting all types of treatments carried out on historic masonry and for keeping a record of environmental and treatment effects on the long-term preservation of the masonry. How to identify the many kinds of deterioration to which historic masonry is susceptible, and how to determine what, if any, treatment is best, or what degree of intervention might be necessary for its preservation, are not easy questions to answer. The continuing influx of new "miracle" products on the market makes these questions even more problematic. Although most of these products were originally developed for application in new construction, many are now being promoted by the manufacturer, or by architects and building contractors, as equally suitable for older and historic masonry materials. Too often, an incorrect and uninformed diagnosis of masonry deterioration results in the application of many such products—in particular water-repellent coatings and consolidants—to historic buildings without adequate, or in most cases without *any*, testing. Unfortunately, this haphazard use of inappropriate or incompatible materials often results in extensive and irreversible damage to the historic masonry.

To date, twenty historic masonry buildings have been recorded on the Census, reflecting a variety of treatments, masonry types, geographical locations, and it is estimated that the project will ultimately include one hundred structures. As the Census project has evolved, we have realized the need for a standard set of definitions for masonry deterioration as well as the preservation treatments prescribed. There is a plethora of terms used to describe problems of historic masonry deterioration and preservation treatments. Because so many of these terms originate from different sources—the architectural profession, the building trades and industry, and scientific fields such

as geology and chemistry—many of them are used interchangeably, often indiscriminately and incorrectly. As a result, the preservation architect or building conservator is left in confusion, uncertain not only how to diagnose a problem, but what to call it, and whether to recommend a treatment.

To help clarify these different, but sometimes nearly synonymous terms, we have developed this illustrated glossary. The glossary is *not* a "how to" manual; it will not supply the technical information, such as specifications, necessary to carry out a cleaning or repair project. Instead it is intended as a general reference and interpretive tool to provide an explanation of all terms likely to be used in the Census to describe conditions of masonry deterioration and repair techniques and treatments to preserve historic masonry.

For purposes of the Census and the glossary, the term "masonry" includes all types of natural stone, brick, terra cotta and adobe, as well as concrete and other cementitious materials. Preservation treatments are broadly defined to include almost everything done to or applied to historic masonry in an effort to prolong its life. The glossary is illustrated and consists of two sections: Part 1 lists and defines problems of masonry deterioration in alphabetical order. Part 2 describes preservation treatments, grouped according to maintenance or repair techniques. It is hoped that the glossary will be useful to all those who are faced with the myriad problems of evaluating, preserving, restoring and rehabilitating historic masonry buildings. This includes historic preservation specialists and architects, architectural and museum conservators, and conservation scientists, as well as representatives of the building industry—such as contractors and masons, and building product representatives.

Although gathered from a wide variety of sources, we realize this glossary is by no means conclusive. It is presented as an initial effort and is intended as the first of many expanded editions to be improved through use and application in the field. We solicit your comments and suggestions for additional terms explaining historic masonry deterioration, and, as the science of masonry conservation continues to evolve, descriptions of new, more suc-

cessful and long-lasting preservation treatments for historic masonry.

The Preservation Assistance Division would like to express its appreciation to all those who have conveyed their experience with historic masonry through the publications which were consulted in the preparation of this glossary, and which are included in the selected reading list. In addition, I would like to personally acknowledge the contribution of the following individuals who provided technical comments on the manuscript: Michael F. Lynch; Erhard M. Winkler; the AIA Committee on Historic Resources; the National Park Service Regions; and the staff of the Preservation Assistance Division, including Michael J. Auer, Bruce Doe, Susan Dynes, Charles E. Fisher, Martha A. Gutrick, Alicia Hardison, H. Ward Jandl, Sharon C. Park, Susan I. Sherwood, Mae Simon, Christopher A. Sowick, and Kay D. Weeks.

This publication has been prepared pursuant to The National Historic Preservation Act Amendments of 1980, which direct the Secretary of the Interior to make available to Federal agencies, State and local governments, private organizations, and individuals information concerning professional methods and techniques for the preservation of historic properties and for the administration of the historic preservation programs at the Federal, State, and local levels. The publication is further evidence of the National Park Service commitment to identify and assess damage to materials and cultural resources as part of its participation in Taskgroup G of the National Acid Precipitation Assessment Program. *A Glossary of Historic Masonry Deterioration Problems and Preservation Treatments* has been developed under the technical editorship of Lee H. Nelson, AIA, Chief, Preservation Assistance Division, National Park Service, U.S. Department of the Interior, Washington, D.C. 20240. Comments on the usefulness of this information are welcomed and can be sent to Mr. Nelson at the above address.

The publication is not copyrighted and can be reproduced without penalty. Normal procedures for credit to the author and the National Park Service are appreciated.

September, 1984

Part 1

Deterioration Problems

Part 1 provides definitions of the most common deterioration problems affecting historic masonry buildings. While there is an obvious similarity of meaning in a number of the terms—the terms blistering, delamination, exfoliation, flaking, peeling and salt fretting are notable examples—all possible definitions have been included in order to be comprehensive. The 22 terms include all levels of deterioration. For example, they run the gamut from lesser problems which appear to be fairly insignificant, such as blistering, to the more serious conditions of delamination or exfoliation. While it would be ideal to reference a treatment for every deterioration problem in the glossary, the very nature of masonry—the fact that stone is not a homogeneous substance, and manufactured masonry materials are not much more consistent—means that any treatment must be carried out only after testing and on a case-by-case basis. Some traditional preservation treatments have been tried and used successfully for a long time, as have some “modern scientific” treatments. But many others have not, and their application has resulted in greater damage to the masonry. Thus, it is clear that technology has not advanced to the point where there is a treatment for every problem. Where a preservation treatment or approach *can* be suggested, however, it is referenced after the description of the problem.

Finally, the reader should understand that if the degree of deterioration is minimal, it is preferable to leave the masonry alone, as long as the problem does not threaten the structural integrity of the building or detract too much from the architectural character. Historic buildings are old and they should not be expected to look perfect.

Deterioration Problems

Blistering

Swelling accompanied by rupturing of a thin uniform skin both across and parallel to the bedding plane, usually a condition found on sandstone, but also on granite. Because blistering can be caused by de-icing salts and ground moisture, it is generally found on a surface close to the ground. Blistering may remain a relatively constant condition scattered over the masonry surface but, more often, it eventually results in greater surface peeling (exfoliation, delamination or spalling).

Preservation Treatment: To date, no completely effective treatment has been developed for this condition.



Blistering of sandstone. Photograph: Anne E. Grimmer.

Deterioration Problems

Chipping

Small pieces or larger fragments of masonry separating from the masonry unit, often at corners or mortar joints. This may be the result of damage caused by later alterations or repairs, such as use of too hard a mortar, or by accident or through vandalism.

Preservation Treatment: See Dutchman Repair, p.56; Replacement/Patching with Like or Compatible Substitute Materials, p.59.



Chipping of granite sill. Photograph: Anne E. Grimmer.

Deterioration Problems

Coving

The hollowing out of an adobe wall just above grade level. Coving may be caused by standing rainwater or rainwater splash off the ground. It can also be caused by salts deposited in the adobe by the evaporation of water.

Preservation Treatment: See Replacement/Patching with Like or Compatible Substitute Materials, p.59.



Coving of adobe wall. Photograph: National Park Service.

Deterioration Problems

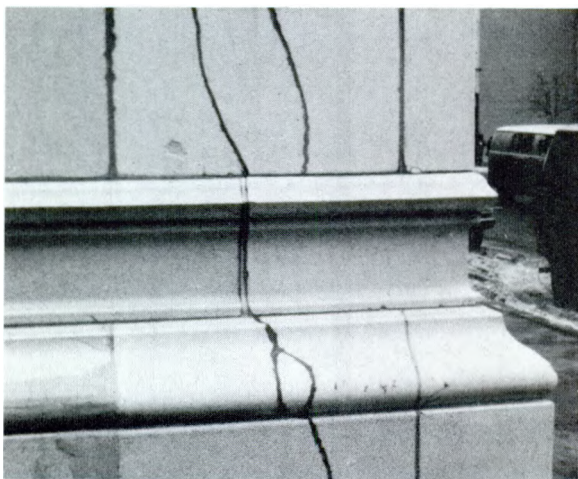
Cracking

A term describing narrow fissures from 1/16 to 1/2 inch wide in a block of masonry. Cracking may result from a variety of conditions, such as structural settlement of a building, too hard a repointing mortar, or it may be an inherent characteristic of the masonry itself, such as unfired brick or adobe. Small cracks within a single block of masonry may not be serious, but longer and wider cracks extending over a larger area may be indicative of structural problems, and should be monitored.

Preservation Treatment: See Mechanical Repair, p.58; Replacement/Patching with Like or Compatible Substitute Materials, p.59.



Cracking of limestone. Photograph: John H. Myers.



Cracking of glazed terra cotta. Photograph: National Park Service.

Deterioration Problems

Crazing

The formation of a pattern of tiny cracks or crackles in the glaze of glazed terra cotta. Crazing (dunting as it is called when it occurs immediately after the firing process and is caused by too rapid cooling) may develop over time as the terra cotta is exposed to the weather. When a terra cotta unit first comes from the kiln after firing, it has dried to its smallest possible size. With the passage of time it expands as it absorbs moisture from the air. The glaze then goes into tension because it has a lesser capacity for expansion than the porous tile body; it no longer "fits" the expanding unit onto which it was originally fired. If the strength of the glaze is exceeded by this expansion, the glaze will crack or craze (sometimes called moisture crazing). Unless the cracks visibly extend into the porous tile body beneath the glaze, crazing should not be regarded as highly serious material failure. It does, however, tend to increase the water absorption capability of the glazed terra cotta unit.

Crazing can also occur on the surface of concrete, generally due to its expansion and contraction, or by excessive water or improper trowelling of a too-rich mix.

Preservation Treatment: To date, no completely effective treatment has been developed for this condition.



Crazing of glazed terra cotta. Photograph: National Park Service.

Deterioration Problems

Crumbling

This condition is indicative of a certain brittleness or tendency of the masonry to break up or dissolve. It may be caused by an inherent weakness of the masonry and gradual dissolution of the binder, or it may be the result of external factors affecting the strength or durability of the masonry, such as salts or moisture entering the masonry.

Preservation Treatment: See Consolidation, p.52.



Crumbling limestone resulting primarily from excess moisture penetration. Photograph: National Park Service.

Deterioration Problems

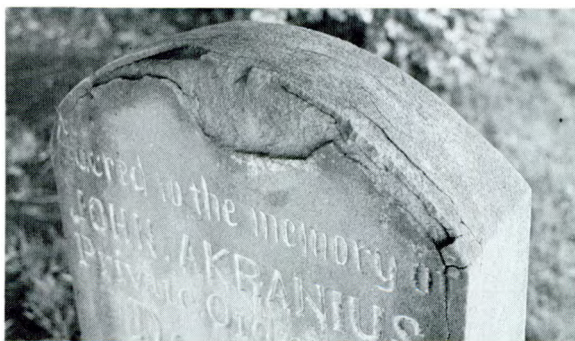
Delamination

A condition of stone in which the outer surface of the stone splits apart into laminae or thin layers and peels off the face of the stone.

Because of their layered composition, this may be a natural condition of sedimentary stones such as sandstone or limestone; and the presence of clay-rich layers can accelerate the process. Delamination differs from spalling in that it is a condition confined to natural, primarily sedimentary, stone and is not a condition that occurs in manufactured products, such as brick.

When sedimentary stones are used in building, this tendency to peel off in layers can be exacerbated by improperly laid stones. Delamination takes place along the natural bedding planes of the stones when they are laid vertically, instead of horizontally—the correct way—and, as a result, are exposed to weathering.

Preservation Treatment: See Stucco, p. 33; Composite Patching/Plastic Repair, p.50; Mechanical Repair, p.58; Replacement/Patching with Like or Compatible Substitute Materials, p.59.



*Delamination of sandstone along the bedding planes.
Photograph: U.S. Corps of Engineers.*

Deterioration Problems

Detachment

The result of a complete break (or failure of an original construction joint) in which the detached portion of masonry survives intact.

Preservation Treatment: See Mechanical Repair, p.58.



Detachment of section of marble pediment. Photograph: Walter Smalling.



Section of marble lying on the ground at base of building after it had separated from pediment above. Photograph: Walter Smalling.

Efflorescence

A whitish haze of soluble salts on masonry generally caused by excessive "pulling" of soluble salts into the masonry and out through the surface. Capillary action may pull soluble salts which result in efflorescence from the ground into the masonry, such as chlorides from salting of streets and sidewalks in winter and nitrates from fertilizers. In addition, carbonates from lime mortar and air-borne or water-deposited pollutants in the atmosphere may cause sulfates to be deposited on the surface of the masonry. Sulfates resulting from the curing and firing process are a common source of efflorescence in brick. Finally, efflorescence may be a combined salt residue left on the masonry surface by chemical cleaning, too strong a chemical solution, or improper rinsing.

Efflorescence itself may be more unsightly than harmful, but its presence on an older or historic masonry building often serves as a warning, indicating that water has found a point of entry into the structure. Once this has occurred, more serious damage can usually be predicted. Efflorescence may also indicate salt accumulations under the surface of the masonry (subflorescence) which are potentially damaging to the masonry, and are most definitely a matter of concern.

Preservation Treatment: See Poulticing, p.44; Water Washing, p.46.



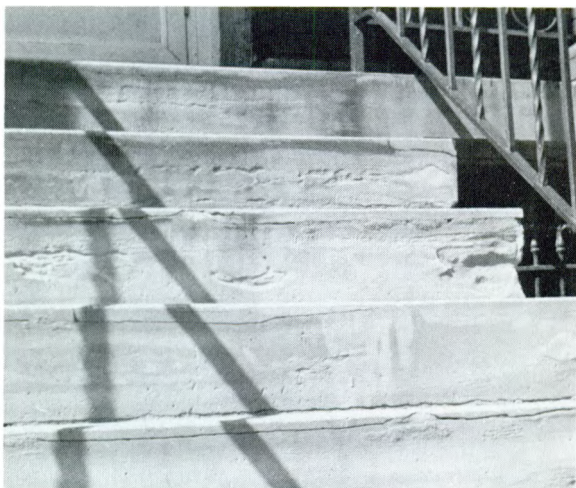
Efflorescence and spalling on brick wall. Photograph: Anne E. Grimmer.

Deterioration Problems

Erosion

Wearing away of the surface, edges, corners or carved details of masonry slowly and usually by the natural action of wind or windblown particles and water. Erosion is one of the most serious kinds of adobe deterioration.

Preservation Treatment: See Replacement/Patching with Like or Compatible Substitute Materials, p.59.



Differential erosion of sandstone steps follows bedding planes of greater and lesser resistance. Photograph: Anne E. Grimmer.

Deterioration Problems

Exfoliation

Exfoliation, like delamination, is a term primarily used to describe natural stone deterioration. Peeling, scaling or flaking off of the surface of stone in thin layers is caused by the expansion and contraction of trapped moisture, by chemical action such as rusting of metal, or by weathering. Exfoliation most often occurs along natural bedding planes, resulting in an unevenly layered surface. Incorrectly laid stones with their bedding plane laid up parallel or perpendicular to the surface of the building thus have a natural tendency to exfoliate faster, following the lines of the bedding planes.

Preservation Treatment: See Stucco, p.33; Composite Patching/Plastic Repair, p.50; Mechanical Repair, p.58; Replacement/Patching with Like or Compatible Substitute Materials, p.59.



Exfoliation of sandstone. Photograph: Anne E. Grimmer.

Deterioration Problems

Flaking

Flaking is an early stage of peeling, exfoliation, delamination or spalling, and is best explained as the detachment of small, flat, thin pieces of the outer layers of stone from a larger piece of building stone. Flaking is usually caused by capillary moisture or freeze-thaw cycles that occur within the masonry. The application of a water-repellent coating may result in flaking of the masonry when trapped moisture is forced to the surface.

Flaking also commonly occurs in masonry coatings, such as paint, or stucco, and results from a loss of adhesion between the coating and the masonry substrate.

Preservation Treatment: To date, no completely effective treatment has been developed for this condition.



Flaking of granite. Photograph: Baird M. Smith, AIA.

Deterioration Problems

Friability

An inherent characteristic of some types of stone, particularly sandstone or limestone, which have a tendency to break up, crumble or powder easily.

Preservation Treatment: See Consolidation, p.52.



Friability in limestone. Photograph: Anne E. Grimmer.

Deterioration Problems

Peeling

Peeling of stone may be caused by an inherent defect in the surface of the masonry or the result of weathering. Improper application of a masonry coating may result in a lack of adhesion to the substrate, and cause the surface of the masonry or coating to flake or peel away from the substrate in strips or layers.

Peeling may also describe a condition of terra cotta in which the glaze or slip has separated from the body of the terra cotta unit. It may be caused when slip is applied to a terra cotta unit that is too dry or a glaze is applied too thickly or to a dusty surface.

Preservation Treatment: To date, no completely effective treatment has been developed for this condition.



Peeling of granite. Photograph: Baird M. Smith, AIA.

Deterioration Problems

Pitting

The development or existence of small cavities in a masonry surface which may be caused by the differential removal of individual components of the masonry and may be the result of natural weathering or erosion of an inherently porous type of masonry. Pitting may also result from a harsh or abrasive cleaning method. Pitting of concrete can be caused by improper mixing, and usually occurs during the curing period.

Preservation Treatment: To date, no completely effective treatment has been developed for this condition.



Pitting of limestone. Photograph: John H. Myers.

Deterioration Problems

Rising Damp

The suction of groundwater into the base of masonry walls through capillary action is called rising damp. Moisture is drawn up into the building walls and released at the interior and exterior surfaces where a horizontal wet stain or tidemark is left. The moisture often carries with it salts in solution, which can result in efflorescence and lead to deterioration of masonry, plaster, wood and paint. Rising damp, often the result of improper drainage, is a problem common to many older masonry structures, and one that is difficult to solve completely.

Preservation Treatment: See Dampproof Course, p.54.



*Rising damp evidenced on parged foundation.
Photograph: John Stubbs.*

Deterioration Problems

Salt Fretting

Sometimes called salt erosion, this condition results in an obvious pattern of erosion or etching of the stones caused by salt, usually from the salting of icy sidewalks. Unless the use of de-icing salts is discontinued, this condition can eventually result in spalling and exfoliation of the stone surface.

Preservation Treatment: To date, no completely effective treatment has been developed for this condition.



Salt fretting on granite base probably resulting from use of de-icing salts on sidewalk. Photograph: Anne E. Grimmer.

Deterioration Problems

Spalling

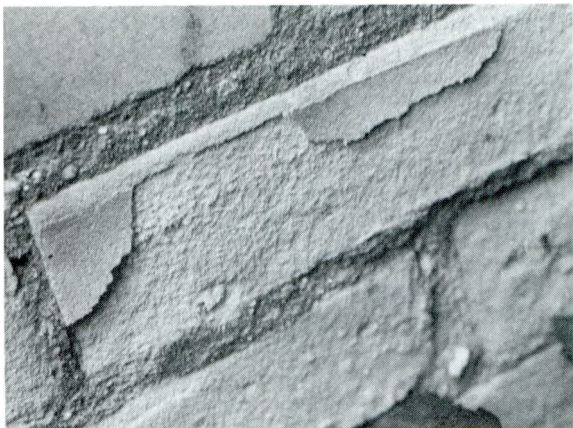
A condition of masonry in which the outer layer or layers begin to break off (unevenly), or peel away in parallel layers from the larger block of masonry. Unlike exfoliation and delamination, spalling is not confined to natural stone, but is also common to brick, and other fabricated masonry materials such as cement products and terra cotta. Spalling is usually caused by the pressure of salts and freeze-thaw cycles of moisture trapped under the surface (subflorescence) which forces off the outer surface or layers of masonry. Spalling can also result from improper laying of stone, exposing bedding planes to weathering and consequent accelerated deterioration, or can be caused by improper repointing techniques utilizing too hard a mortar which does not allow for expansion and contraction of the masonry blocks, thus causing pieces or edges of the masonry blocks to chip or spall off. Improper cleaning techniques, especially abrasive methods, may remove the outer protective layer of brick, terra cotta, or stone, thereby hastening deterioration and spalling of masonry.

Spalling of terra cotta is of two types: glaze spalling and material spalling. Both are the result of air-borne water or water from other sources being trapped behind the glazed surface of the clay. When the water builds up in sufficient pressure to cause expansion of the clay body, the relatively impervious glaze prevents the water from escaping, and the glaze will blister or pop off from the clay surface (glaze spalling), or the clay body itself may fracture or disintegrate (material spalling). Spalling in terra cotta, as in other types of masonry, may also be caused by deterioration of the internal anchoring system which holds the units to the building structure. Water infiltration causes the metal anchors or metal reinforcement to rust which in turn creates increased internal pressure in the masonry units or concrete, resulting in spalling, and potential failure of the structural system if the anchoring fails completely.

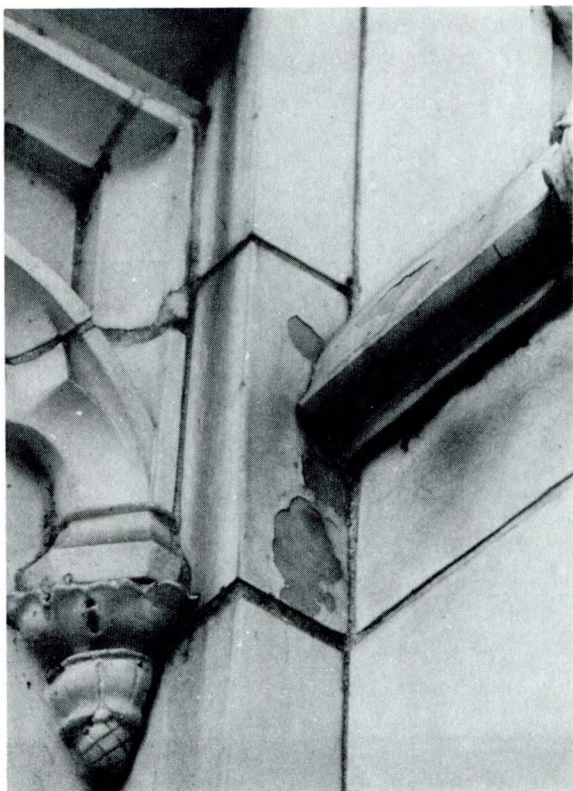
Preservation Treatment: See Stucco, p.33; Water-Repellent Coating, p.36; Composite Patching/Plastic Repair, p.50; Consolidation, 52

Deterioration Problems

p.50; Replacement/Patching with Like or Compatible Substitute Materials, p.59.



Spalling of brick. Photograph: Susan Dynes.



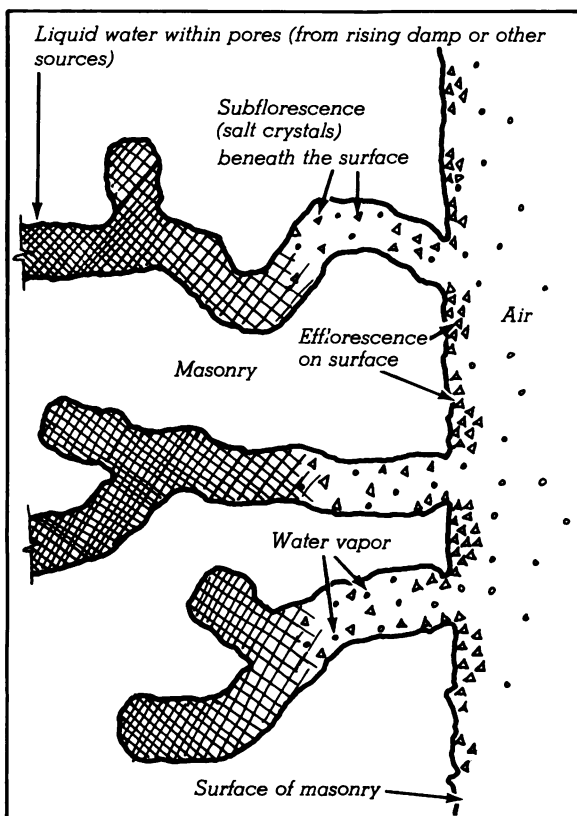
Glaze spalling of glazed terra cotta. Photograph: John H. Myers.

Deterioration Problems

Subflorescence

Subflorescence is a potentially harmful accumulation, or hidden build-up, of soluble salts deposited under or just beneath the masonry surface as moisture in the wall evaporates. Particularly during the freeze-thaw cycle, the moisture and salts in the wall freeze and expand, building up pressure within the masonry, which, if sufficient, may cause parts of the outer surface of the masonry to spall off or delaminate. External signs of efflorescence may indicate the presence of subflorescence beneath the surface. (Subflorescence is sometimes referred to as cryptoflorescence.)

Preservation Treatment: See Dampproof Course, p. 54.



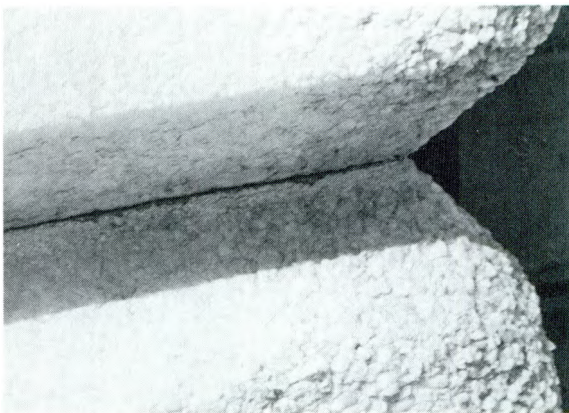
Salts dissolved in water drawn into stone through capillary action evaporate as subflorescence beneath the surface of the stone, and may be evidenced on the stone surface as efflorescence. Illustration: Christina Henry.

Deterioration Problems

Sugaring

A characteristic of some masonry indicative of gradual surface disintegration, possibly caused by salts dissolved in and transported through the stone by moisture and consequent dissolution of the binder. Carbonate stones, especially fine grained marble, are particularly susceptible to this granular, sometimes powdery condition.

Preservation Treatment: See Consolidation, p.52.



Sugaring of marble. Photograph: Anne E. Grimmer.

Deterioration Problems

Surface Crust/Surface Induration

The movement of moisture toward the surface of stone and the outer edges results in the formation of a hard crust on the surface parallel to the worked surface. Some of these crusts, particularly if they are calcitic in nature, can provide a protective surface to the stone.

Other such crusts resulting from a chemical reaction of the stone to airborne pollutants leading to the dissolution of, and migration of, cementing material from within the stone, may be temporary and, in fact, could be indicative of impending disintegration of the stone (especially sandstone), when the disintegrating block of stone through spalling or exfoliation is itself creating this temporary and superficial surface. (Sometimes this phenomenon is referred to as surface hardened or quarry crust.)

Preservation Treatment: To date, no completely effective treatment has been developed for this condition.



Surface crust on sandstone resulting from dissolution of the stone. Photograph: Erhard M. Winkler.

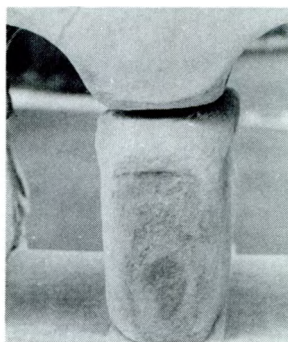
Deterioration Problems

Weathering

The natural disintegration and erosion of stone caused by wind and rain, resulting in granular and rounded surfaces. Weathering is particularly pronounced on sharp corners, or highly carved or projecting architectural details. Acid rain water in particular, in contact with acid soluble, carbonate stone, can be very damaging, increasing the natural weathering rates, and also resulting in noticeable softening or loss of masonry details.

Honeycomb or alveolar weathering is a type of erosion common to sandstones and limestones, and other non-homogeneous masonry materials. It is characteristic of arid climates, but may also be found in more humid areas. Cavities (alveoles) are created in a honeycomb pattern on surfaces exposed to strong winds where evaporation of salts occurs directly below the surface.

Preservation Treatment: Replacement/Patching with Like or Compatible Substitute Materials, p.59.



Weathering has reduced the formerly sharp edges and rounded the corners of this marble baluster. Photograph: John H. Myers.

Part 2

Preservation Treatments

The preservation treatments defined in Part 2 are divided into two general categories: *Maintenance* (such as application of surface coatings, caulking and cleaning); and *Repair* (such as consolidation, plastic repair or patching/replacement). *Maintenance* treatments described and illustrated include those basic day-to-day practical and preventive procedures that should be carried out in an effort to preserve historic building material and prevent the need for repairs. *Repair* treatments imply that a greater degree of intervention into the historic fabric is necessary and thus describe and illustrate techniques which must be undertaken when regular maintenance treatments are not adequate to halt deterioration. Often, there simply is no effective preservation treatment that has been developed to date that can be recommended; however, where an appropriate treatment has been developed for a specific masonry problem that is defined and illustrated in Part 1, it is referenced in the Part 2 text.

The reader should be aware that Part 2 includes a number of treatments (such as abrasive cleaning and the application of a water-repellent coating) which are not generally recommended preservation treatments for historic masonry. Such treatments have been included here in an effort to be as comprehensive as possible, and because they may occasionally be recommended preservation treatments, if applied under appropriate professional supervision.

Maintenance



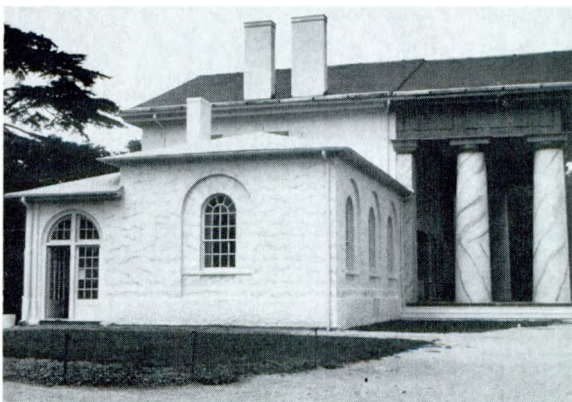
Preservation Treatments

Application of Surface Coatings

Paint

Any pigmented liquid, liquefiable, or mastic composition designed for application to a substrate in a thin layer which is converted to an opaque solid film after application. Paint is generally applied as a protective coating to poor quality or porous masonry to keep out moisture; it may also be used purely for decoration on a historic building.

Paint applied to masonry may be solvent or water based, or may be a masonry paint of a slightly cementitious nature specially formulated with various types of aggregate or thickening agents to smooth rough or uneven masonry walls. Color washes based on lime, such as whitewash, although not technically considered to be paint, and color stains which do not form a film on top of the masonry, but instead penetrate into the masonry substrate, have traditionally provided many of the same benefits as paint.

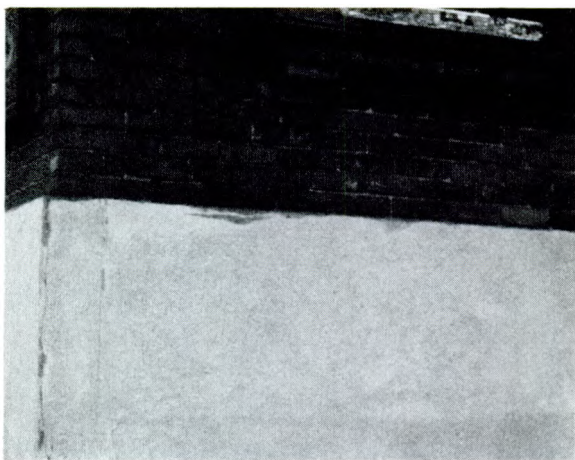


Paint used as a purely decorative aspect to simulate marble on a stucco surface. Photograph: National Park Service.

Preservation Treatments

Parging/Pargeting

In masonry construction, a thin coat of cement mortar (often containing dampproofing ingredients) applied to provide a smooth surface for rough masonry, or as a dampproofing measure for rough masonry, foundation and basement walls. In Great Britian, parging or pargeting describes the traditional decorative plastering of the exterior, including timbers, with a tough lime plaster reinforced with ox-hair and decorated with impressions or patterns made with a mold or comb.



Parging over brick. Photograph: National Park Service.

Preservation Treatments

Stucco

An exterior finish for masonry or frame walls, usually composed of cement, sand, and hydrated lime, which, when mixed with water and applied wet to a surface, adheres to it and subsequently sets or hardens, preserving in a rigid state the form or texture imposed during the period of elasticity. This term was originally used for all plasterwork, but now is generally confined to smooth plastering on the outside of a wall. Stucco was originally made with lime and sand, or gypsum plaster, often with the addition of mud, animal hair or other fibrous material to give color and/or body to the stucco mixture. Stucco is the term given to exterior plasterwork, which in some geographical regions may still be called plaster, in part to differentiate traditional stucco (plaster) from the more common type used today which is composed primarily of portland cement and sand. Historically, stucco was generally smooth surfaced, and often scored to imitate ashlar; however, sometimes rough cast and pebble-dashed surfaces may also be included in the category of stucco.

Rendering is a term frequently used in Great Britain to mean stucco or coats of mortar applied to an external wall to produce a smooth surface and to prevent rain penetration. When referring to exterior or interior plastering, "render" can also mean the first thick or coarse coat of plaster on a wall, usually followed by a second or third finishing coat.

(continued)



Stucco scored to resemble blocks of stone. Photograph: Anne E. Grimmer.

Preservation Treatments

Stucco (continued)

Rendering can also mean the process of applying stucco with a trowel or float.

If **delamination**, **exfoliation**, or **spalling** is present, the application of a stucco coating may be an appropriate repair treatment for stone. First, however, try to determine the source of the problem, and eliminate that if possible. While there are no satisfactory treatments known to prevent further spalling, there are a number of repair techniques available which may be successful. Depending on the cause and the degree of severity of the spalling, one option is to cover the deteriorated stone surface with a stucco coating which can be painted and scored to resemble the original masonry material.

Preservation Treatments

Waterproof Coating

These coatings seal the masonry surface from both liquid water and water vapor; they may be clear or opaque—and include bituminous coatings such as those applied to building foundations, and also some paints. They generally do not cause problems as long as they exclude all water from masonry, but if water does enter the wall, the coating can intensify the damage to the wall because the water will not be able to escape. Basically, waterproof coatings make a surface *impervious* to water.



A neoprene coating over a limestone cornice has trapped water (which entered through leaks in the parapet) inside these stone dentils. The built-up water pressure has finally forced the coating to pop off, taking with it pieces of the stone. Photograph: National Park Service.

Preservation Treatments

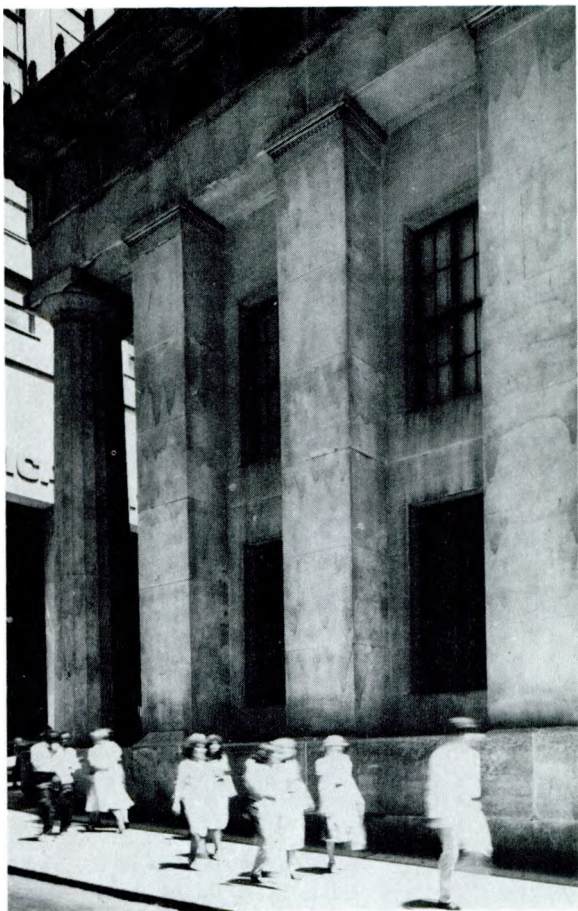
Water-Repellent Coating

A clear coating which keeps liquid water from penetrating the surface but allows water vapor to enter and leave through the "pores" of the masonry; although usually colorless or transparent (such as silicone coatings), they may change the reflective property of the masonry, and therefore change its visual qualities or appearance. Since these coatings do not seal the surface against water vapor, it can enter and leave the wall. But once inside the wall, the water vapor can condense into liquid water, which will not be able to get back out through the water-repellent coating. Trapped inside the masonry by the water-repellent coating, this liquid water may do considerable damage to interior finishes, or if it freezes, to the exterior. Water-repellent coatings create a surface that *repels* water.

If **spalling** is present, and depending on the cause and the degree of its severity, the application of a water-repellent coating to a *limited* area, may—in some instances—serve to slow down the rate of deterioration. This treatment should only be employed when the masonry is completely dry before the water repellent is applied, when water is prevented from re-entering, and when all other remedial techniques have been investigated. The application of a water-repellent coating will not, however, prevent further spalling and would be, at best, a temporary solution.

A water-repellent or waterproof coating should never be applied to an already damp or wet building which may be likely to have **sub-florescence** under its surface. Such a coating would further prevent the excessive moisture (and dissolved salts) within the wall from evaporating out through the walls, thereby almost ensuring that the walls retain the water and salts, and thus increasing the possibility of spalling.

Preservation Treatments

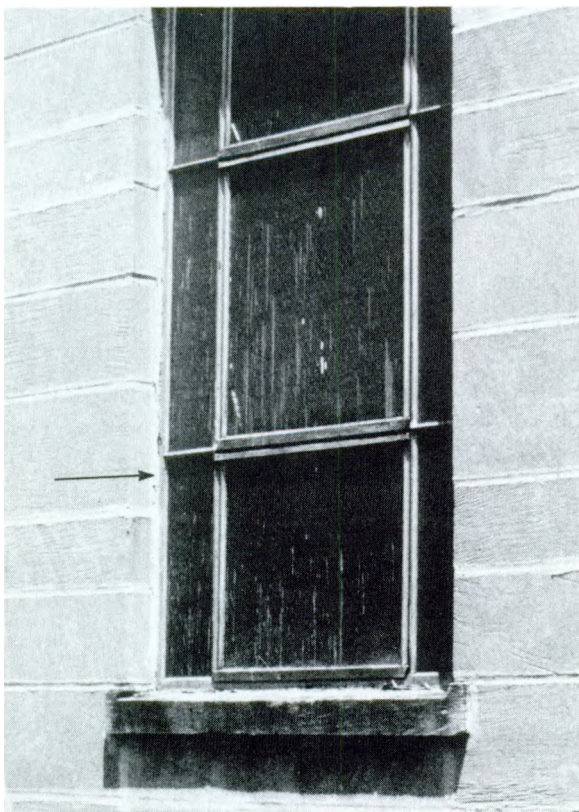


Water-repellent coating improperly applied gives a blotchy appearance to the stonework. Photograph: Walter Smalling.

Preservation Treatments

Caulking

A resilient (semi-drying or slow-drying) mastic compound, usually of a synthetic composition such as silicone or acrylic, used to seal cracks, fill joints, prevent leaks and, in general, provide weatherproofing and waterproofing. Most caulking materials used today are non-historic materials (i.e., synthetic) and are used primarily in new construction. Caulking should not be used as a substitute for mortar in re-pointing; however, it does have some useful application on historic masonry, to seal between materials of different coefficients of expansion, such as caulking around wood or metal windows on a masonry building.



Caulking used as weatherproofing between window frame and masonry wall. Photograph: National Park Service.

Cleaning Methods

Abrasive Cleaning

Abrasive cleaning methods include all techniques that remove soil, discolorations or coatings. Such techniques involve the use of certain materials which impact and abrade the surface under pressure, or abrasive tools and equipment. Sand, because it is readily available, is probably the most commonly used type of grit material. However, many other materials may be substituted for sand and all can be classified, in varying degrees, as abrasive substances: ground slag or volcanic ash, crushed (pulverized) walnut or almond shells, rice husks, ground corncobs, ground coconut shells, crushed eggshells, silica flour, synthetic particles and glass beads, to name a few. Even water under pressure can be an abrasive substance. Tools and equipment that are abrasive and damaging to historic building materials include wire brushes, rotary wheels, power sanding disks and belt sanders. The use of water in combination with grit may also be classified as an abrasive cleaning method. Depending on the manner in which it is applied, water may soften the impact of the grit, but water that is too highly pressurized (over 400 psi) can itself be very abrasive to historic masonry. There are basically two different methods which can be referred to as "wet grit." One technique involves the addition of a stream of water to a regular sandblasting nozzle, done primarily to cut down dust, and has very little, if any, effect on reducing the cutting action of the grit particles. With the second technique, a very small amount of grit is added to a pressurized water stream. This method can be somewhat gentler, its abrasive action controlled by regulating the water pressure and the amount of grit fed into the water stream. Other more euphemistic terms, such as "hydrosilica blasting" or "silica dusting," are used to refer to some abrasive cleaning methods, usually sandblasting. Abrasive cleaning is generally not an acceptable cleaning method for historic masonry buildings except in a few very limited, and carefully controlled situations.

(continued)

Preservation Treatments

Abrasive Cleaning (continued)



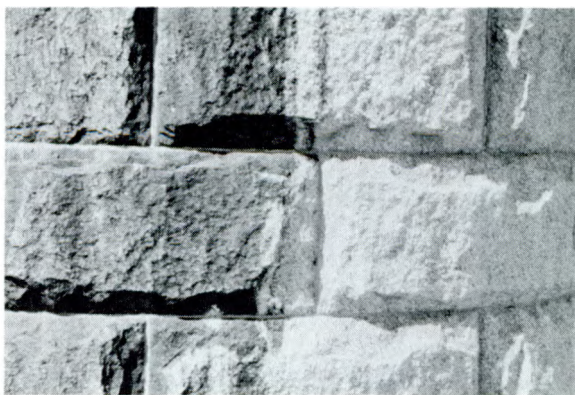
Photograph: National Park Service.

Preservation Treatments

Chemical Cleaning

Chemical cleaners for historic masonry buildings are of two types: acidic (low pH) cleaners which are formulated for use on *most* granite, slate, sandstone, and all non-calcareous stones, and unglazed brick; and alkaline (high pH) cleaners which are used on acid-sensitive masonry materials, such as limestone and marble, glazed brick and glazed terra cotta. Common to both types of chemical cleaners is the inclusion of surfactants (organic compounds with powerful properties of detergency and wetting). Acidic cleaners must be removed from the masonry by a thorough water rinse or a "neutralizer." Alkaline cleaners are rinsed off in a two-part process: first they are given a slightly acidic wash, then a thorough water wash.

Although chemical cleaning is generally an acceptable technique for cleaning historic masonry buildings, and certainly the most effective and least damaging method of removing paint, if not carried out with adequate precautions, it can also be damaging to historic masonry. Some of the potential hazards of chemical cleaning include inappropriate or too strong a chemical solution, cleaning during cold weather or when there is a possibility of frost, insufficient rinsing of the masonry after application of the chemical mixture, and environmental or health hazards.



Chemical cleaning to remove urban dirt and pollution from granite without causing damage or abrasion to the surface of the stone.

Photograph: H. Ward Jandl.

Preservation Treatments

Paint Removal

Total paint removal from masonry can usually be accomplished only with the application of chemical paint removers containing either alkalis such as sodium or potassium hydroxide, or organic solvents such as methylene chloride or combinations of other solvents. The dissolved paint is then rinsed from the masonry using a low pressure water wash. Most of these commercially prepared paint strippers also contain a thickening agent or gel that enables the remover to cling to a vertical surface.

Most paints are soluble in organic solvents; paints which have a linseed oil binder are also soluble in alkalis. Some other coatings, such as lime washes (including whitewash or color wash), are soluble in acid. None of these paint removal methods is without problems, however. Both organic solvents and alkalis can be dangerous to cleaning personnel. Organic solvents are expensive, and can also spread stains deeper into the masonry (unless used in poultice form—not always a practical method if removing paint from large areas); alkali-based cleaners can cause efflorescence unless the masonry surface is pre-soaked, and after cleaning, is thoroughly rinsed with water. Sometimes after cleaning the surface must be neutralized by rinsing with a mild acidic solution such as acetic acid, or brownish stains may occur if there are any iron compounds in the stone. Acidic cleaners can also result in efflorescence, or yellow staining, and can cause considerable damage to adjacent shrubbery, metalwork and glass.

Because of the problems inherent in any chemical removal of paint from masonry, it is not advisable to undertake such a project without first weighing the pros and cons of total paint removal, and of course, carrying out tests in an inconspicuous location on the building. Limited paint removal or removal of excess layers of paint or badly peeling paint in preparation for repainting, should be carried out by hand using natural bristle brushes and hand scrapers.

Paint which is significant as a historic finish should not be removed from those buildings which were painted initially or soon after con-

Preservation Treatments

struction, either for aesthetic reasons or to protect inherently poor quality brick.

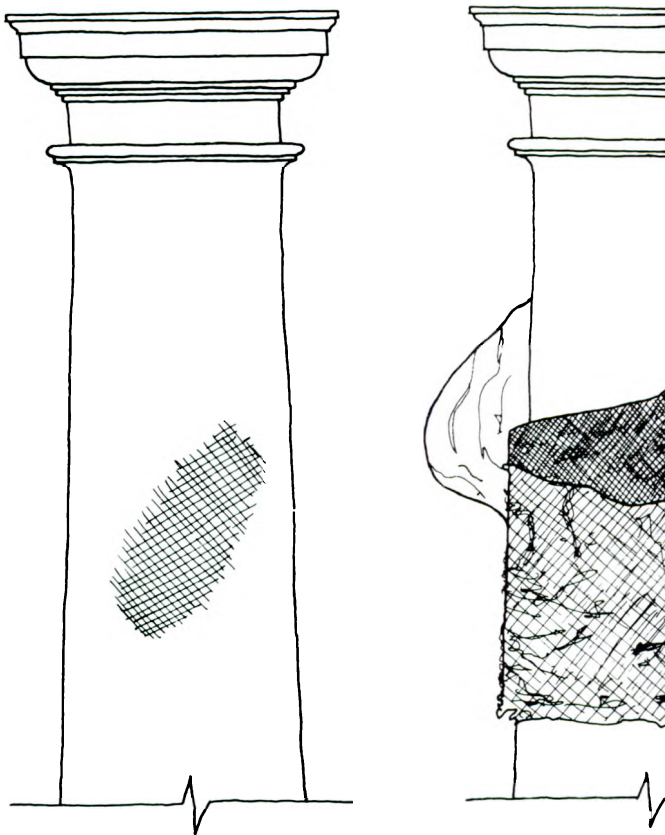


Paint removal from sandstone. Photograph: Baird M. Smith, AIA.

Preservation Treatments

Poulticing

A technique used for cleaning or removal of stains from porous masonry. The principle of poulticing is to draw the stain out of the masonry, to be reabsorbed by the poultice material, while other cleaning methods would just tend to redeposit the stain in the masonry or push it deeper into the masonry. A poultice is composed of an absorbent material, such as

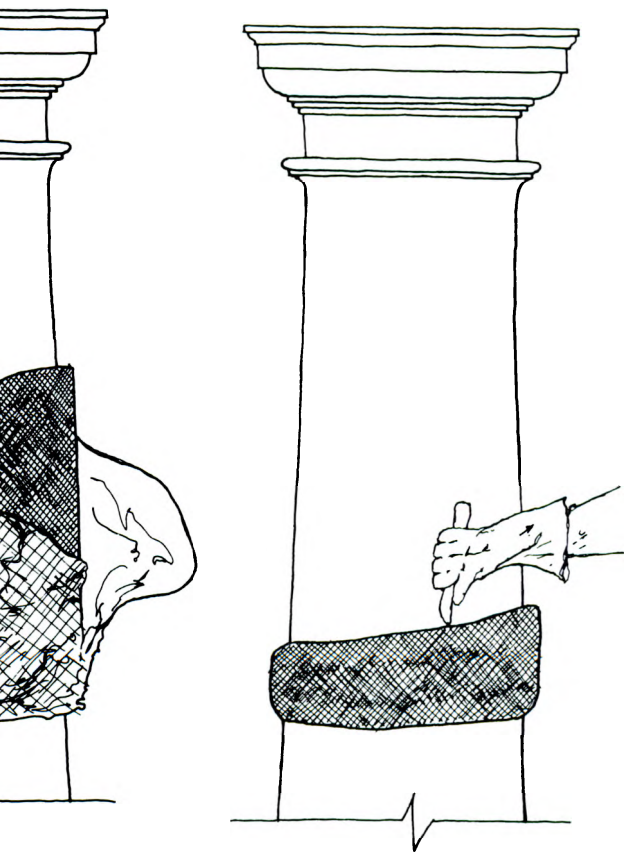


Poultice is applied (saturated with solvent appropriate to remove particular stain). Polyethylene sheet prevents too rapid drying of poultice. After poultice has dried out, the

Preservation Treatments

talc, fuller's earth, whiting, or even shredded paper that has been saturated with a solvent chosen to dissolve the specific type of stain.

Poultices may be successfully applied to remove such stains as: oil, tar, plant materials (lichens and algae), graffiti (including spray paint), metallic stains such as iron and copper, and occasionally, some types of salt deposits or **efflorescence**.



pack is removed carefully by hand with the aid of wooden spatulas. Finally, the column is rinsed with water.
Illustration: Christina Henry.

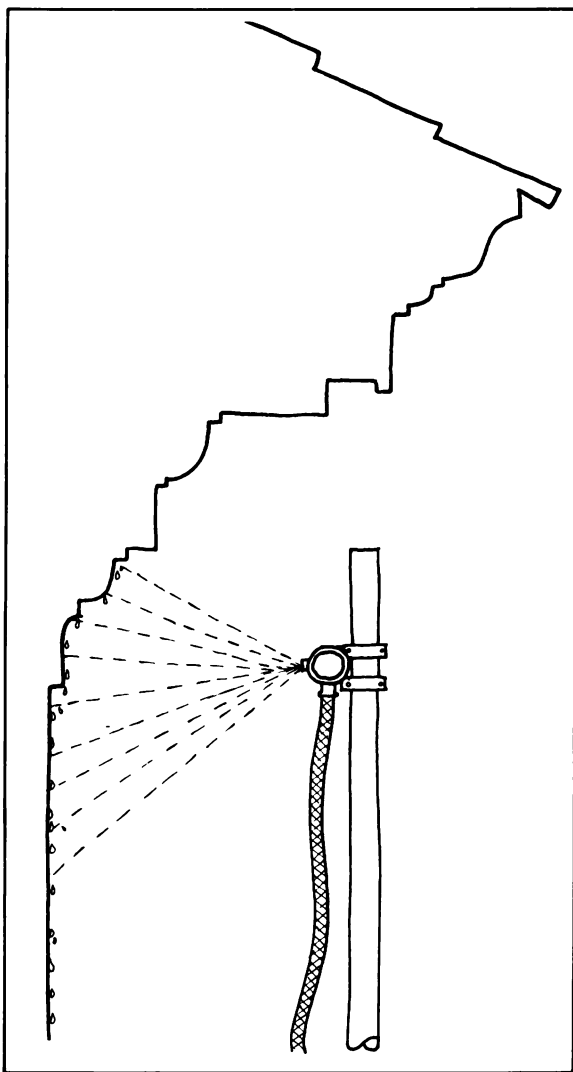
Preservation Treatments

Water Washing

Water washing may be the most versatile and gentle technique used for cleaning, or dirt removal, from historic masonry buildings. Different water washing methods include: prolonged spraying using a fine mist, high or low pressure washes, steam, water in combination with detergents, and water in combination with chemicals. But even simple water-based cleaning procedures and high pressure (over 400 psi) water blasting can damage historic masonry. The large quantities of water necessary to clean a large structure can seep into the masonry, often causing corrosion of hidden metal elements, and consequent staining of the masonry. Water used for cleaning may contain minerals or may bring out impurities in stone masonry causing permanent discoloration of the stone. Soft water, for example, should not be used on carbonate stone because of the possibility of dissolution of the stone. Any wet method of cleaning must be carried out only when there is no danger of frost or freezing; if there is not adequate time for thoroughly saturated masonry to dry out before a frost, liquid water may freeze inside the masonry, resulting in hastened deterioration and eventual spalling. Water washing is also an effective, if sometimes temporary, technique for removing **efflorescence** from the surface of masonry.

Steam cleaning, another method of water washing, is no longer as popular as it once was, in part because it is slow, generally no more effective than plain water, and poses safety hazards to the operator. However, it is still useful in some stain removal and as a means of removing dirt from highly carved or highly ornamented surfaces without risk of abrading the surface. Steam is generated in a flash boiler, and directed against the masonry surface at a low pressure of about 10-30 psi using a nozzle with a ½ inch aperture. Detergents and chemicals may be added to supplement the cleaning power of the steam.

Preservation Treatments



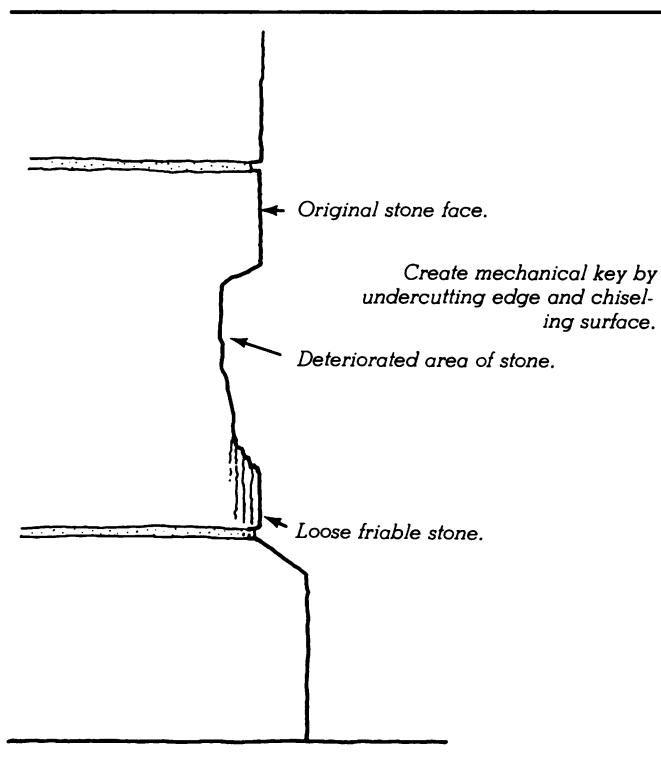
Water washing over an extended period of time using a fine spray or mist to gently soften areas of heavy dirt deposit. Water is sprayed through holes of a pipe or hose suspended from above area being washed. Illustration: Christina Henry.

Repair

Preservation Treatments

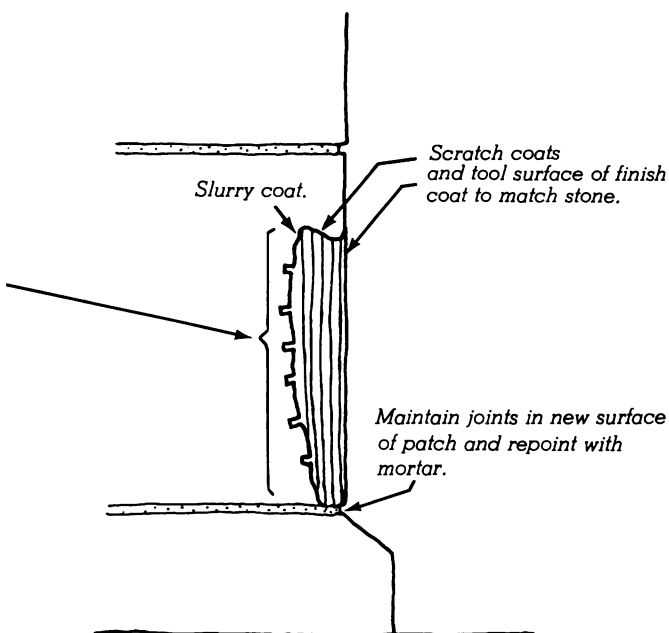
Composite Patching/ Plastic Repair

A repair treatment carried out by patching selected areas of deteriorating masonry with a cementitious material. Plastic repair can be quite successful if limited to small cavities or small areas of missing stone (no larger than 1-3 inches deep). If carried out by a skilled workman, plastic repair can sometimes be less obtrusive than a replacement in natural stone, and much cheaper. Mixes vary according to the type of masonry being repaired, but are based on a cementitious mix, and should always be weaker than the masonry being repaired. Sand and/or crushed stone is the usual aggregate. Some artificial coloring may be needed to make the patch blend in with the historic masonry, but it may reduce the strength of the repair and the color may fade. While larger patches may seem to require ad-



Preservation Treatments

ditional support, in the form of stainless steel or polyester pins or anchors, use of such supplementary devices is not always very satisfactory. Successful composite patches should match the stone in color and texture, replicate surface tooling, adhere well to the stone substrate, and should not cause deterioration of surrounding stone. In comparison with natural stone, plastic repairs can look rather dull and lifeless, and for this reason also, should be used only in small areas; however, such repairs can sometimes be painted to match adjacent areas of masonry. If composite patching or plastic repairs are carried out using too hard a mix, they may not adhere, or may accelerate weathering and deterioration of the adjacent natural stone, partly because of the different rates of expansion. This type of repair may also be referred to as dental repair, and is sometimes appropriate for **delamination, exfoliation, or spalling**.



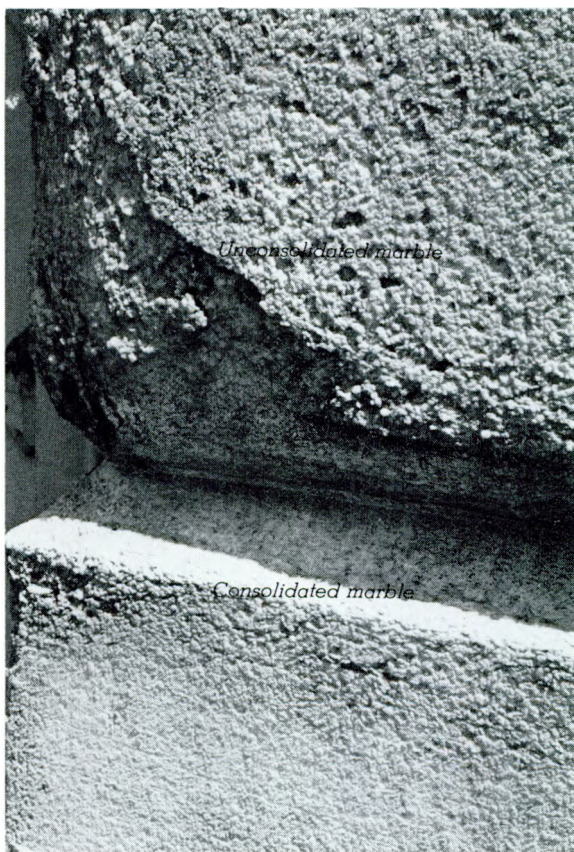
Shape cementitious patching material to match original profile of stone. Maintain joints in new patched surface and repoint with mortar. Illustration: Christina Henry.

Preservation Treatments

Consolidation

Consolidation is a process carried out in a effort to strengthen masonry, particularly natural stone and concrete and is generally undertaken in an attempt to bring back together or consolidate deteriorating or disintegrating masonry (through **crumbling, friability, spalling**, or loss of binder in **sugaring**). Consolidation generally involves application of an inorganic substance such as barium hydroxide or injection of some type of a chemically-curable monomer such as methyl methacrylate and n-butyl methacrylate or a clear silicone polymer such as the group of silanes, silicones, alkoxysilanes, and silicone esters. Silicone surface coatings, wax or other water-repellent coatings are also often tried as consolidants—often without success. The difficulty or near impossibility of achieving a deep enough penetration or impregnation of the masonry with a consolidant makes the application of consolidants of somewhat dubious value at this time. However, it is anticipated that in coming years with continued scientific research, a consolidant will be perfected with qualities of greater penetration, and which will actually perform as a true masonry consolidant. Limewater is the clear saturated solution of lime in water (slaked lime or calcium hydroxide) and traditionally was applied to historic limestone in Great Britain as a kind of natural consolidant.

Preservation Treatments



A barium hydroxide consolidant (nearly invisible in the photograph) has been applied here in an attempt to consolidate this sugaring marble. Photograph: Christina Henry.

Preservation Treatments

Dampproof Course

Installation in masonry of a horizontal layer of material which is impervious to water, such as tile, slate, lead-cored bituminous sheet or bituminized felt, polyethylene sheeting, or metal, to prevent the capillary rise of moisture—**rising damp**—from the ground into the masonry wall. Historically, some masonry buildings were constructed with a dampproof course, but usually dampproof courses must be added later as a remedial measure to correct problems caused by rising damp. A traditional dampproof course is not installed without difficulty, as a continuous horizontal course must be cut out of the mortar or brick at a level just above the ground and below first floor joists, and the dampproofing material inserted in an uninterrupted horizontal course. This system



The horizontal row of white dots in the brick headers indicates that a chemical dampproof course has been injected. Photograph: Baird M. Smith, AIA.

Preservation Treatments

can be utilized on walls that are regularly coursed and stable. If the mortar is severely deteriorated, the wall may be too unstable to cut out the joint without dislodging masonry units above. For walls more than eight inches thick, it may be necessary to work from both sides. Because of the difficulty of inserting this type of dampproofing, in recent years other techniques have been devised such as injection of a chemical dampproof course, insertion of a synthetic or plastic course, and a system based on electro-osmosis to create a dampproof barrier.

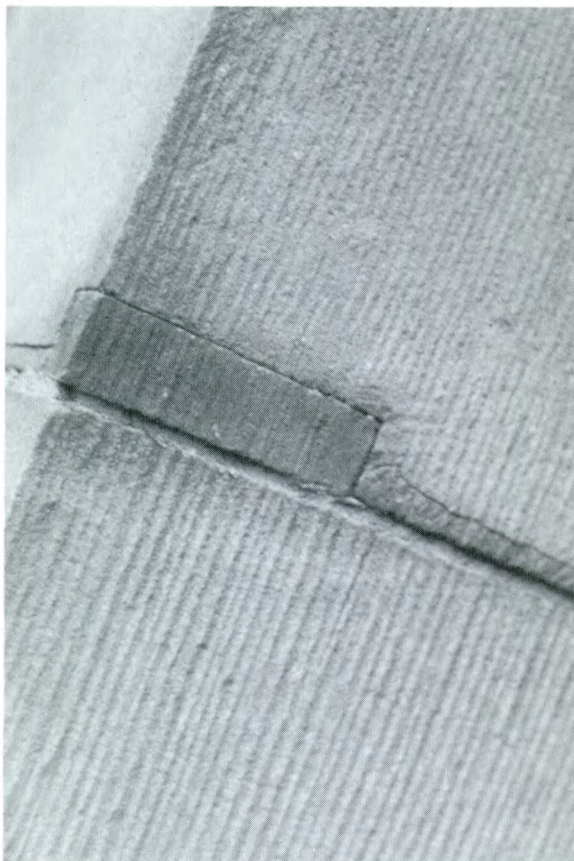
Some type of dampproofing treatment may be necessary to minimize **subflorescence**, or to eliminate the source of moisture which is carrying harmful salts into the building.



Preservation Treatments

Dutchman Repair

This type of partial replacement or "piecing-in" can be done either with natural stone or with a pre-cast imitation as a treatment for **chipping** stone. It involves replacing a small area of damaged stone with a new unit. The new stone is either wedged in place or secured with an adhesive. The joint between new and old should be kept as narrow as possible to maintain the appearance of a continuous surface.

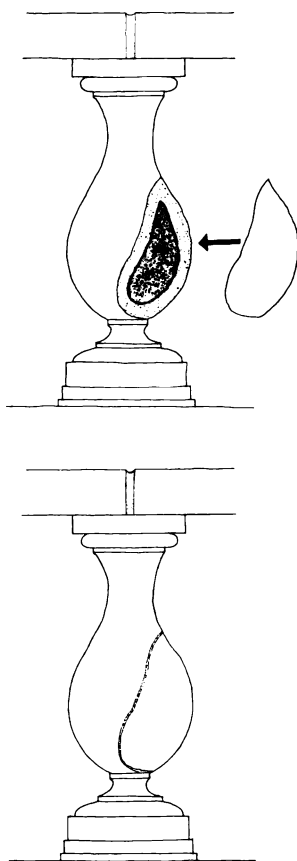


Dutchman repair using sandstone to match original tooled sandstone. Photograph: Anne E. Grimmer.

Preservation Treatments

Epoxy Repair

Repair carried out by patching selected areas of deteriorating masonry using an epoxy mixture, which is part of a class of synthetic, thermosetting resins which produce tough, hard, chemically resistant coatings and excellent adhesives. Epoxy resins can be used for repairing broken stones, and are particularly good for putting back together small, carved or other decorative details. Epoxies can also sometimes be used to repair small defects, imperfections, or thin pieces of detached stone by veneering or "gluing" on new replacement pieces.

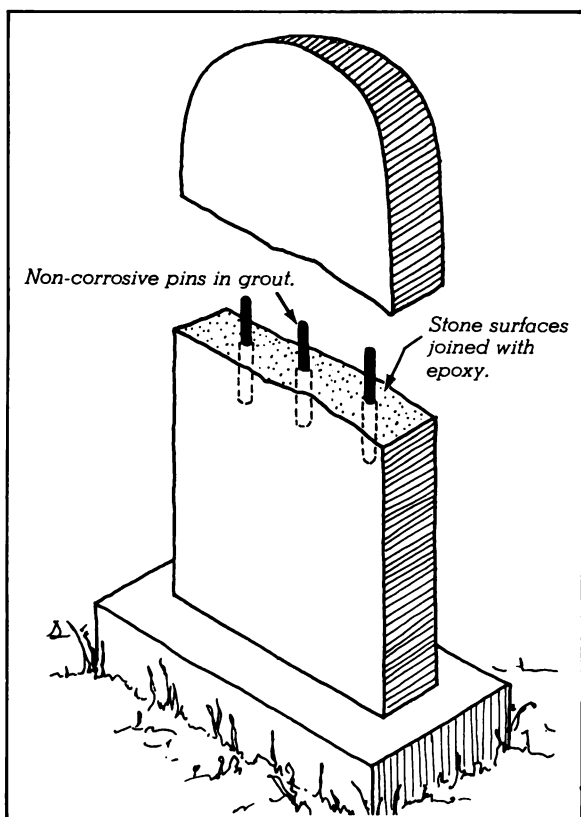


Epoxy repair of broken terra cotta baluster in which epoxy is applied to the break. The broken piece is reattached and the joint smoothed so repair is not visible.
Illustration: Christina Henry.

Preservation Treatments

Mechanical Repair

This treatment may be defined as the use of cutting back, drilling, reinforcement pinning, and grouting methods to fasten together fractured masonry. This type of repair may be appropriate for use on the following kinds of deterioration: **cracking**, **delamination**, **detachment**, and **exfoliation**. Each of these problems merits a slightly different variation of mechanical repair.



Mechanical repair of detached tombstone using grout and pins. Illustration: Christina Henry.

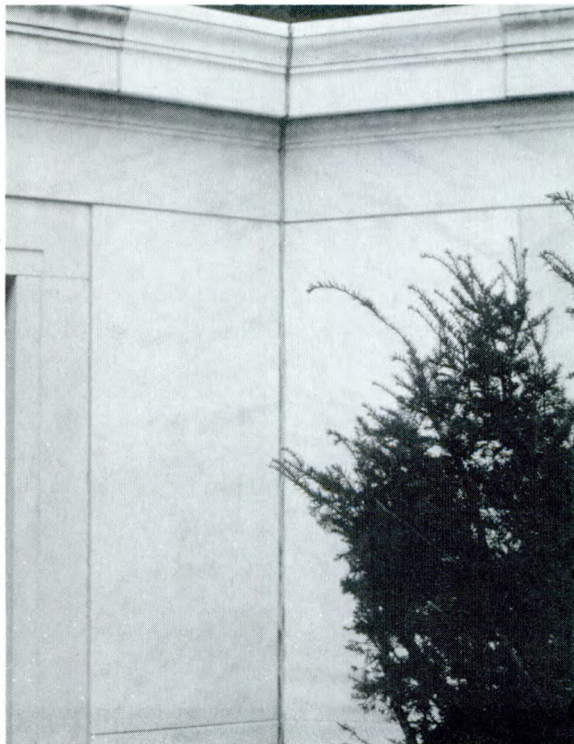
Preservation Treatments

Replacement/Patching with Like or Compatible Substitute Materials

The replacement of missing, broken, cracked or otherwise deteriorated historic masonry units with a new piece or pieces of the same material, such as stone, terra cotta, brick or adobe. This repair technique is generally preferable to repair with a non-matching or synthetic material, if suitable matching materials are available.

Areas of adobe that have been subject to **caving** should be patched with adobe, using clay with a texture and color close to the original, after improving the drainage and eliminating, if possible, the moisture problem. **Cracking** in adobe may be repaired using a procedure similar to repointing. It is necessary to rake out the cracks to a depth of 2 or 3 times the width of a mortar joint to obtain a good "key", and patch with adobe mud.

(continued)



The two sections in the center have been replaced with marble matching the original. Photograph: Anne E. Grimmer.

Preservation Treatments

Replacement/Patching (continued)

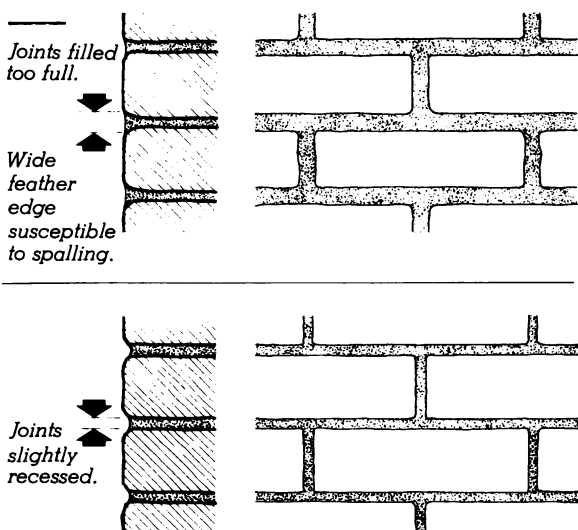
Once stone **delamination** or **exfoliation** has begun, there are at this time no methods of consolidation or of preventing further deterioration known to be completely successful. If the degree of delamination is only slight, it may be best to leave the stone as it is. In some instances however, there are several primarily cosmetic repair techniques which may be successful. If the block of stone is thick enough (and does not have decorative detailing), one method is to cut back the delaminating layers to sound stone, or another approach might be to remove the delaminating stones, then reverse and replace them on the facade. If these techniques are not feasible, it may be necessary to replace the deteriorating stone, either with matching stone, or a stone-like substitute (such as precast concrete or cast stone); or patch individual stones with a cementitious mixture; or cover the deteriorating stone facade with a stucco coating and scoring the surface to resemble blocks of stone, after cutting back to sound stone. Individual masonry units, badly damaged or disfigured by **chipping**, **erosion**, or **weathering**, may have to be replaced with a matching masonry material, an appropriate substitute material, or patched with a cementitious mixture. Like delamination, there are no satisfactory treatments known to prevent further **spalling**, but there are a number of repair techniques available which may sometimes be at least temporarily successful. Depending on the cause, and the degree of severity of the spalling, there are a number of options. If deterioration is severe, the historic masonry can be resurfaced with natural stone or brick veneer; or the deteriorated masonry units patched with like or compatible substitute materials (such as cast stone or concrete).

Repointing/Tuckpointing

Repointing, or tuckpointing, is the process of removing deteriorated mortar by hand from the joints of a masonry wall to a depth of $\frac{1}{2}$ to one inch, replacing the deteriorated mortar with new mortar, and finishing the joints with a profile to match the original. Ideally, repointing mortar should duplicate the original as closely as possible. This frequently means using a soft, high-lime content mortar that is softer (measured in compressive strength) than the bricks or stone and no harder than the historic mortar. Repointing mortar for most historic buildings (constructed before the 20th century) should ideally be composed only of lime and sand in water. White portland cement may be substituted for up to 20% of the lime to achieve workability or plasticity without adversely affecting the most desirable qualities of lime mortar. It may also be necessary to add pigment, crushed shells or colored sand to achieve a mortar that resembles the original.

In British usage, tuckpointing refers to a method of pointing in which a lime putty or

(continued)



Comparison of visual effect of full mortar joints vs. slightly recessed joints. Filling joints too full hides the actual joint thickness and changes the character of the original brickwork. Illustration: National Park Service.

Preservation Treatments

Repointing/Tuckpointing (continued)

mortar (white or black) is placed over a regular mortar joint as a decorative treatment to give the illusion of very fine joints.

Use of a scrub coating or face grouting is generally not an appropriate treatment for historic masonry and should not be substituted for repointing.

Selected Reading List

- Amoroso, Giovanni G., and Vasco Fassina. *Stone Decay and Conservation: Atmospheric Pollution, Cleaning, Consolidation and Protection*. Materials Science Monographs, 11. Amsterdam, The Netherlands: Elsevier Science Publishers B. V., 1983.
- Ashurst, John, and Francis G. Dimes. *Stone in Building: Its Use and Potential Today*. London: The Architectural Press, Ltd., 1977.
- Berryman, Nancy D., and Susan M. Tindall. *Terra Cotta: Preservation of an Historic Building Material*. Chicago: Landmarks Preservation Council of Illinois, 1984.
- Borchelt, J. Gregg (compiler). "Glossary of Masonry Terms." *The Masonry Society Journal*. Vol. 1, No. 1 (January - June 1981), pp. G13-G21.
- Brunskill, Ronald, and Alec Clifton-Taylor. *Brickwork*. London: Van Nostrand Reinhold Company, 1982.
- Clark, Elizabeth J., Paul G. Campbell, and Geoffrey Frohnsdorff. *Waterproofing Materials for Masonry*. NBS Technical Note 883. National Bureau of Standards, U.S. Department of Commerce, Washington, D.C.: 1975.
- Conservation of Historic Stone Buildings and Monuments*. Report of the Committee on the Conservation of Historic Stone Buildings and Monuments. Washington, D.C.: National Academy Press, 1982.
- Construction Dictionary: Construction Terms and Tables*. Phoenix: Greater Phoenix, Arizona Chapter #98 of The National Association of Women in Construction, 1981.
- Davey, Andy, Bob Heath, Desmond Hodges, Roy Milne, and Mandy Palmer. *The Care and Conservation of Georgian Houses: A Maintenance Manual*. London: The Architectural Press, with Edinburgh New Town Conservation Committee, revised 1980.
- Fielden, Bernard M. *Conservation of Historic Buildings*. London: Butterworth & Co., 1982.
- Gilder, Cornelia Brooke. *Property Owner's Guide to the Maintenance and Repair of Stone Buildings*. Technical Series/No. 5. Albany, New York: The Preservation League of New York State, 1977.
- Harris, Cyril M. (ed.). *Dictionary of Architecture and Construction*. New York: McGraw-Hill, Inc., 1975.
- International Masonry Institute. *The Masonry Glossary*. Boston: CBI Publishing Company, Inc., 1981.

Lynch, Michael F., and William J. Higgins. *The Maintenance and Repair of Architectural Sandstone*. New York: New York Landmarks Conservancy, 1982.

Matero, Frank G., and Jo Ellen Freese. "Notes on the Treatment of Oil and Grease Staining on a Masonry Surface." *Association for Preservation Technology Bulletin*, Vol. X, No. 2 (1978), pp. 132-141.

McKee, Harley J., FAIA. *Introduction to Early American Masonry: Stone, Brick, Mortar and Plaster*. National Trust / Columbia University Series on the Technology of Early American Building 1. Washington, D.C.: National Trust for Historic Preservation and Columbia University, 1973.

Preservation Briefs, National Park Service, Department of the Interior, Washington, D.C.:

1. *The Cleaning and Waterproof Coating of Masonry Buildings*. Robert C. Mack, AIA. November, 1975.
2. *Repointing Mortar Joints in Historic Brick Buildings*. Robert C. Mack, AIA, de Teel Patterson Tiller, and James S. Askins. August, 1980.
5. *The Preservation of Historic Adobe Buildings*. August, 1978.
6. *Dangers of Abrasive Cleaning to Historic Buildings*. Anne E. Grimmer. June, 1979.
7. *The Preservation of Historic Glazed Architectural Terra-Cotta*. de Teel Patterson Tiller. June, 1979.

Scott, John S. *A Dictionary of Building*. Baltimore: Penguin Books, Ltd., 1969.

Sleater, Gerald A. *A Review of Natural Stone Preservatives*. NBSIR 74-444. Center for Building Technology, Institute for Applied Technology, National Bureau of Standards, U.S. Department of Commerce, Washington, D.C.: 1973.

Stone Preservatives: Methods of Laboratory Testing and Preliminary Performance Criteria. NBS Technical Note 941. Center for Building Technology, Institute for Applied Technology, National Bureau of Standards, U.S. Department of Commerce, Washington, D.C.: 1977.

Strangstad, Lynette. "Patching Limestone and Marble: A Step-by-Step Guide." *The Old-House Journal*. Vol. X, No. 7 (July 1982), pp. 133, 143-147.

"Patching Brownstone." *The Old-House Journal*. Vol. X, No. 8 (August 1982), pp. 161-164.

Weaver, Martin. "Cleaning Masonry: A Look at Water and Chemical Treatments." *Canadian Heritage* (December 1981), pp. 39-42.

Weiss, Norman, Jeanne Teutonico, Frank Matero and Raymond Pepi. *Sandstone Conservation Study*. Sponsored by the New York Landmarks Conservancy, with a matching grant-in-aid from the Department of the Interior through the New York State Office of Parks, Recreation and Historic Preservation. Unpublished manuscript and undated (c. 1981-82).

Winkler, E. M. *Stone: Properties, Durability in Man's Environment*. New York: Springer-Verlag, 1973.

UNIVERSITY OF MINNESOTA

wils.gov
I 29.2:H 62/19

A Glossary of historic masonry deteriora



3 1951 002 920 288 A

