



# Beautifying the EEOB

How The President Can Achieve His  
Beautification Vision Without Painting



# CLEANING

**Problem:**

The exterior is significantly overdue for comprehensive conservation cleaning. Grime, soot, and staining dull the granite's natural tone.

**Solution:**

Undertake a conservation-grade cleaning program. Use low-pressure chemical steam washing, targeted stain removal, and appropriate biocide treatment.

**Outcome:**

Restores the granite's natural brightness and uniformity. Preserves material integrity and breathability.

---

# Cleaning



Current



After

# Cleaning



Current



After

# Cleaning



Current



After

# REPOINTING

## **Problem:**

Mortar joints have weathered and deteriorated over time. Inconsistent color and erosion create visual patchiness and allow moisture intrusion.

## **Solution:**

Carefully remove failing mortar and repoint using a historically compatible mix. Match original color, texture, and joint profile. Ensure proper curing and moisture performance.

## **Outcome:**

Restores crisp masonry lines and visual uniformity.  
Improves weather protection and long-term durability.  
Fully consistent with preservation best practices.

---

# Repointing Mortar



Current



After

# Repointing Mortar



Current



After

# IRONWORK

## **Problem:**

Decorative ironwork has layered, cracked, and peeling paint. This diminishes appearance and exposes metal to corrosion.

## **Solution:**

Remove failing coatings. Prepare surfaces properly. Apply a high-gloss, corrosion-resistant protective finish consistent with historic standards.

## **Outcome:**

Sharpens architectural detail. Protects against rust. Improves overall refinement.

---

## Repainting Ironwork



Current



After

## Repainting Ironwork



Current



After

# LIGHTING

**Problem:**

The EEOB's exterior lighting is outdated, uneven, and insufficient to showcase its architectural detail.

**Solution:**

Install modern, energy-efficient façade-wash lighting. Reduce shadow contrast and create even illumination. Use tunable white light to subtly enhance perceived brightness. Highlight architectural details rather than mask original materials.

**Outcome:**

Stronger visual presence day and night. Fully reversible. Modernizes the building without altering historic fabric.

---

# Architectural Lighting (*Night*)



Current



After

# Architectural Lighting (*Day*)



Current



After

# WINDOWS

**Problem:**

The EEOB's 1,572 windows read dark from the exterior, adding visual heaviness to the façade.

**Solution:**

Remove old interior blinds. Install light-diffusing white sheers that allow 90% natural daylight while preserving outward visibility for staff. Use window film to cancel reflection.

**Outcome:**

Immediately lightens the building's daytime appearance. Low cost. Fully reversible.

---

# Window Sheers & Film

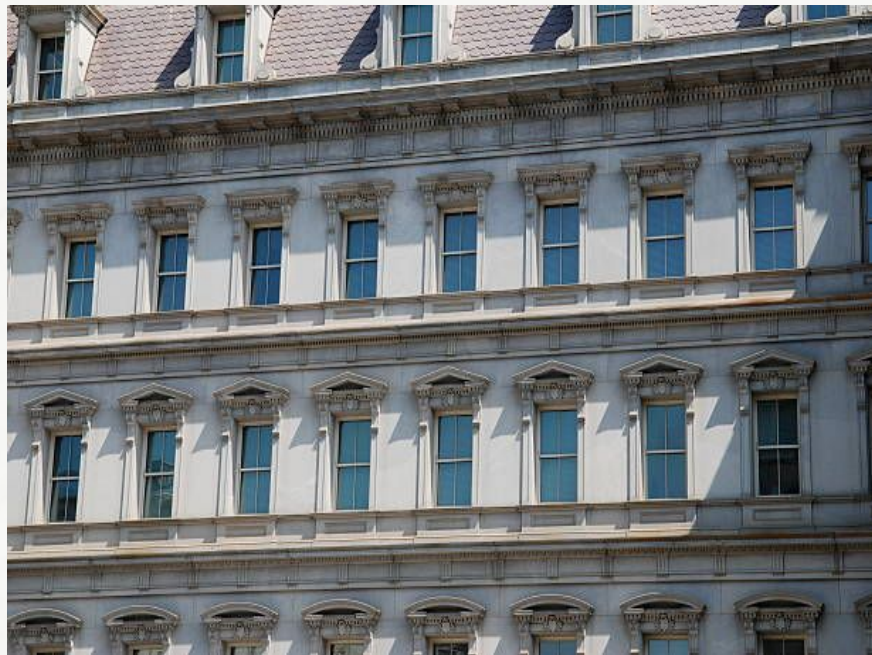


Current

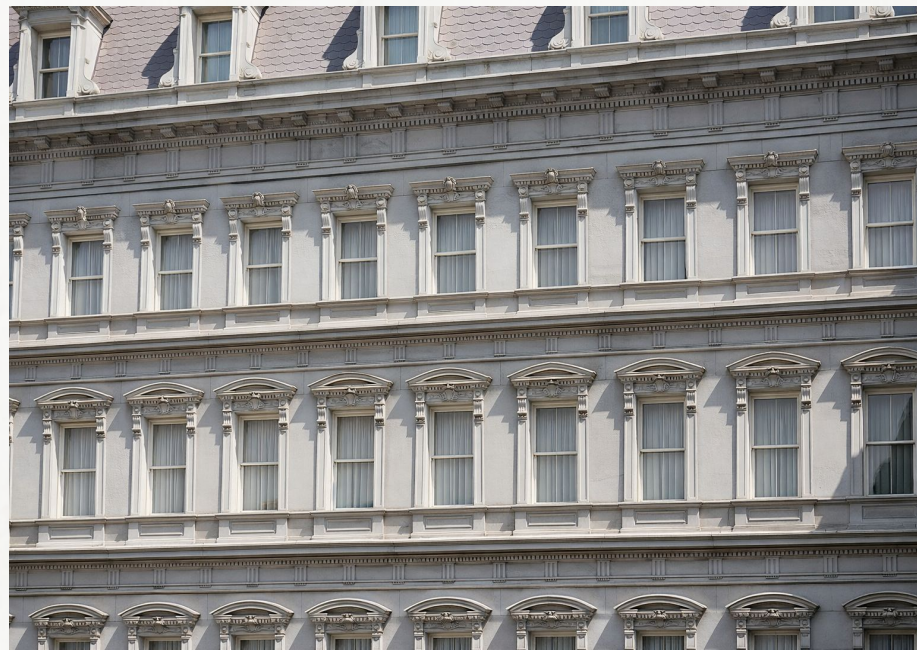


After

# Window Sheers & Film



Current



After

# LANDSCAPING

**Problem:**

The surrounding landscape lacks visual distinction and seasonal impact.

**Solution:**

Install structured gardens, coordinated plantings, and seasonal color. Design to complement the building's scale and grandeur.

**Outcome:**

Elevates the setting immediately. Highly visible enhancement with broad aesthetic appeal.

---

# Landscaping



Current



After

# Landscaping



Current



After

# MAGIC PAINT MISCONCEPTION

## **Problem:**

The President suggests that mineral silicate masonry paint will not harm the EEOB.

## **Reality:**

The world's leading experts say that such paints are magic—but for other types of stone—not granite, which lacks a key ingredient required for chemical bonding; and it would be even more harmful at EEOB than regular paint.

## **Outcome:**

The President will have broad support for letting go of his painting strategy.

---

# MINERAL SILICATE PAINTS ON HISTORIC MASONRY



Limestone



Marble



Sandstone



Granite

---

# Read the Experts' Survey

---